

THE PICKET LINE

February 2005



Officers

President

Rich Inman 388-1564

Vice President

Janet Castro 388-0966

Secretary

Trina Frederickson 522-9315

Treasurer

Cinda Eichenfels 227-6508

Directors

2 yr

Lori Brockway 587-7198

Joellyn Howell 388-4493

John McIlhattan 586-9094

1 yr

Wally Becker 587-9607

Donna McGeein 587-5645

Beth Merrick 388-4047

State Board Members

Brown Parsons 2 yr

Dan Marsh 1 yr

Alternate: Linda Kelly 1yr

Newsletter Editor

Jiffie Hale 763-4105

cell 580-6455

jhale@littleappletech.com

BCH Web Master

Dan Marsh 587-7578

dmarsh@montana.edu

Board Meeting

Wednesday, February 2nd @ 7pm

At Janet Castro's 388-0966
990 Bulltail Rd, Belgrade

General Meeting

Thursday, February 17th @ 6pm

Belgrade Alliance Church, Cameron & Hoffman

Wild Game Potluck Supper

Don't forget to bring your utensils

Program

Platelet Rich Plasma (PRP)

"From human to horse for soft tissue wounds"

Presented by Jacy Cook, DVM

**And Roy Lewis. Cell Management
Assoc., Inc.**

See article page 3

Backcountry Horsemen Mission Statement
 "The purpose of this organization shall be (1) to perpetuate the common sense use and enjoyment of horses in Montana's road less back country and (2) to assist the various government agencies in their maintenance and management of said resource and (3) to educate and solicit active participation by various members of the general public in the wise and sustaining use of horses and people, commensurate with our heritage and the back country's resource."

Our annual Wild Meat Potluck begins at 6pm. Program begins at 7pm

This will be a post Valentine  party for our "sweeties."

Please remember to bring your plates and eating utensils. Coffee will be available.

If you unable to bring a wild game dish, no matter, bring your favorite casserole, veggies, bread/rolls and/or desserts.

Plan to attend to have a wonderful time experiencing all the delicious and various dishes we members contribute. General meeting will follow program.

Dues are past due:

Our constitution states: Article II, Section 3 " ... Dues shall be assessed on a calendar year basis, and shall be payable as of January 1 of each year. Dues for a member, which are delinquent as of March 1 of the year, shall be cause to drop the member from the mailing list and there shall be no exception made to this policy..."

Therefore, you might want to pay your dues ASAP to keep your newsletter coming. You had received an application on the last page of your December issue. If you misplaced it please contact Jiffie at 763-4105 or email at jhale@littleappletech.com. To save club postage our web site has the application for you to print at www.bchmt.org. Dues are \$40 family and \$30 individual.

Defensive Horsemanship Meeting

For those on this committee there will be an important meeting on
Monday, January 31st, 7pm at Chick Hale's home at 11150 Gooch Hill Rd. 763-4105

Please bring your ideas

New procedure for horses *by Jacy Cook, DVM (edited by Roy Lewis)*

A serious soft tissue wound to your horse does not have to be as frightening as it used to be. Many times owners were inclined to euthanize these animals to prevent undue suffering and pain. Conventional treatments were often passive and hopeful; while rehabilitation could be costly and lengthy. A new treatment has been used on about a dozen horses at our clinic and is offering new hope in the treatment of your horse. This treatment could offer them a realistic goal of a quick and effective recovery at a cost effective price and ultimately could save the lives of these horses.

We start the process by drawing 500 milliliters of the horse's blood, which is spun down and the platelets and plasma are removed. This is known as **platelet-rich plasma** (PRP). Then we combine the PRP with bovine thrombin and calcium chloride to activate the platelets and form a gel, which will release growth factors into the wound. The gel is then applied to the wound and covered by a bandage. The bandage is left on for two weeks at a time. PRP offers rapid healing by releasing growth factors that speed up the tissue and vascular regeneration that is needed to heal these serious wounds. Some of the components act as a natural barrier to bacterial infection. The repair is pain free and is cosmetically improved from previous treatments. Usually only two or three treatments are needed to speed the recovery time and improve final overall healing.

In the unfortunate incident that your horse should be seriously injured, be sure to ask your veterinarian if platelet-rich plasma will help in the recovery of your horse.

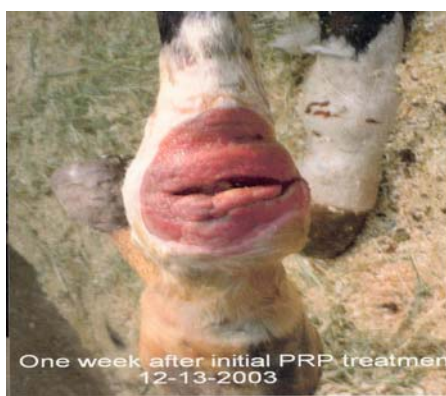
This technology was brought to the veterinary community via human medicine. In human hospitals, PRP is used for many applications including dental, orthopedic, spinal, vascular and cosmetic surgeries. It is also being utilized successfully in the treatment of chronic non-healing wounds. As veterinarians we should welcome this new technology and use it to improve the outcome of previously frustrating cases.

"Platelet-Rich-Plasma, Platelet Gel, PRP are all names coined for the use of this autologous derived platelet concentrate. Studies have shown that there may be a relationship between PRP use and the incidents of Increased Bone Regeneration, rapid soft tissue healing and hemostasis." quote from web site: www.prpservice.com

In Montana, 15 to 20 horses have been fortunate enough to have been offered this procedure. Roy Lewis of Cell Mgmt. Assoc., Inc. has moved from Florida to Livingston, MT especially to offer this procedure to veterinary hospitals. Both Roy and Jacy will be our guest speakers at our February meeting. Jacy Cook, DVM, wife Karyn Cook, DVM and Jacy's father Gary Cook, DVM are owners of All West Veterinary Hospital located at Four Corners. Their vet staff also includes Dan Butterfield, DVM and Shari Skifstad, DVM and their large assistant staff for both small and large animals.



Straight wire laceration with tendon damage.
1 month post injury.



One week after initial PRP treatment
12-13-2003



One Month after second PRP treatment
1-14-04

Want to see these pictures in color? Check our web site www.bchmt.org

GVBCH Board Meeting Minutes January 8, 2005

Attendance: Rich Inman, Janet Castro, Trina Frederickson, Cinda Eichenfels, Beth Merrick, Wally Becker, Donna McGeein, John McIlhattan, Joellyn Howell, Joan Holbotn, Joyce Haner, Sharon Lowry, Sonja Berg, Chick and Jiffie Hale. Absent:: Lori Brockway and Jim Nelson.

Minutes from Board meeting of December 1, 2004 accepted. Motion by Beth; second by Joellyn.

Motion by Beth and second by Janet to pay bills from Kinko's Diamond Engraving and Gallatin Valley Catering.

We received a greeting from our insurance company and our 2005 Montana Corporate Report.

Ed Witsken contacted Trina Frederickson regarding the amount of dues he was to remit for his membership to the GVBCH. The question arises as he belongs to another branch of the BCH. The Board consensus was to make Ed an Honorary Member and charge him \$10/year in order to continue receiving the GVBCH NL.

At the next General Meeting (Jan 20) the club will be planning the 2005 schedule of events. At the following General Meeting (Feb 17) we will be holding a wild game potluck dinner. Any additions/changes to the events calendar will be done at this dinner as well.

Jiffie will call Bonnie to see if her planning calendar is available for us to use.

In preparation for the upcoming Poker Ride, Jiffie has agreed to contact Costco & Murdoch's for donations. Due to the size of these organizations, contact has to be made well in advance in order to be successful.

Defensive Horsemanship and First Aid training clinics need to be offered and conducted prior to April, 2005 (the start of the riding season). Chick has agreed to coordinate this undertaking.

Cinda, Joan and Janet will be doing the annual auditing of the GVBCH accounts.

Meeting adjourned at 8:45pm

Respectfully submitted by Trina Frederickson, sec

GVBCH General Meeting. Minutes January 20, 2005

Attendance: Rich Inman, Janet Castro, Trina Frederickson, Cinda Eichenfels, Joellyn Howell, John McIlhattan, Wally Becker, Donna McGeein, Beth Merrick. and members for a total of 22 present. Absent: Lori Brockway. Guest: Janice Cartwright, making a total of 22 members in attendance.

Meeting called to order at 7:20pm

Minutes of the December 10, 2004 were accepted, motion by Beth; second by Chick.

Treasurer's report was accepted and passed; motion by Donna; second by Chick. Beth motioned to pay outstanding bills; second by Sonja. Accepted.

The only correspondence received were bills and newsletters from various other horse clubs.

Dan Marsh gave a report on the Board of Director's meeting held December 11, 2004.

The schedule of events for 2005 was drafted by the GVBCH members in attendance. These events include a number of trail rides, projects, as well as some programs we would like to see in the year.

The next general meeting will be held on February 17th and will be a Wild Game Potluck dinner. Dinner will be at 6pm followed by the program at 7pm. If you are attending the dinner, please bring your own plates.

Meeting was adjourned at 9:05pm.

Respectfully submitted by Trina Frederickson, sec

See page 5 for treasurer's report

GVBCH General Meeting, January 20, 2005

Treasurer's report as of Jan 20, 2005 by Cinda Eichenfels:

Checking a/c balance as of November 18, 2004 \$3,151.83

Deposits (+)

Dues	\$722.00		
Christmas dinner	\$480.50		
Dues	\$222.00		\$1,424.50

Checking a/c balance \$4,576.33

Bills Paid (-)

Kinko's	\$51.86		
Postmaster	37.00		
GV Catering	480.00		
Diamond W. Engraving	42.00		
Kinko's	48.60		
L Kelly Reimburse	182.40		\$842.36

Don't forget your dues

Checking account balance January 20, 2005 **\$3,733.97**

Other assets

Petty Cash	\$40.96		
Money Market	\$1,943.41		
3 month CD (VS)	\$3,111.90		\$5,096.27

Trail Rides/projects/programs for the upcoming year, submitted by Trina Frederickson, sec


Rides: Copper City; Round Mt/Horseshoe Hills; Red Bluff; Garnet MT; Elk Calf Ride/Sage Cr; Fan Creek (day ride); Porcupine Ride; Chamber Fondue Pitchfork Ride; Elk bugle Ride/Bacon Rind.

Projects: National Trails Day/Spanish Cr trail clearing; Bridger Mts/Clear trails for Poker Ride; Flagging of trail for Poker Ride; GVBCG Poker Ride; Poker Ride clean up; Adopt-a-trail work day/Spanish Cr; Parades/Sweet Pea, Manhattan, Belgrade

Programs suggested: Packing demo w/ Steve Edwards; Bears w/Keven Fry; Horsemanship training; Travel plan; Management; Saddle fitting; Lewis & Clark; T-Touch; John McIlhattan on hoof suspension; Trail riding; Dutch oven cooking; Defensive Horsemanship; Pasture mgmt; The Glass Horse Ride & Tie

All members will receive the finalized schedule of events, trail rides and programs in the March newsletter.

BRIDGER FEEDS



MANAGER

ROBBY MOCK

PHONE: 406-586-3026

OWNER

MARCIA S. ANDERSON

For Sale

5 yr old Appaloosa gelding. Well trained, good disposition, calm, good in mts. Has been packed.

Asking \$2,500. (Tack also for sale)

2003 WW 2 horse trailer with tack room. New condition. Asking \$5,000.

Anna 406-994-0074 or Brent 406-209-0894

We thank these sponsors for their generous contributions to our 2004
Gallatin Valley Backcountry Horsemen 17th annual Poker Ride

Ag Depot

All West Veterinarian

Ardesson Boots & Shoes

Big Sky RV

Billion Dodge

Bitterroot Trailer Sales

Bob Ward & Sons

Bozeman Saddle Outlet

Bridger Feeds

Century 21/Dan Porter

Chalet Sports

Concrete Construction

Costco

DJ Bar Ranch/Jehnet Carlson

Double Diamond Halters

Four Corners Saddlery

Freeway Enterprise

Gourmet Gas Station

Kountry Korner Café

Lee & Dad's

Montana Canvas

Montana Harvest

Murdoch Ranch & Home

Owenhouse Ace Hardware

Precision Fence System

RO Brooks

Rocky Mountain Hat Co.

Schnee's Boots & Shoes

Shear West/Diana Swan

Valley View Veterinarian Hospital

Club Members::

Dick & Barbara Haines

Laura Hanks

John & Joellyn Howell

Rich Inman

Jack & Sharon Lowry

Beth Merrick

Dave & Lisa Reed

Linda Roffe

Kay Tate



Gallatin Valley Backcountry Horsemen

Box 3232

Bozeman, MT 59772-3232

