

BOARD MEETINGS:
1st Thursday, 7 PM

GENERAL MEETINGS:
3rd Thursday, 7 PM

Springhill Church
4769 West Babcock, Bozeman

OUR PURPOSE:

Shall be to perpetuate the common sense use and enjoyment of horses in the back country and assist the various government agencies in their maintenance and management of the resource and to educate, encourage and solicit active participation by various members of the general public in the wise and sustaining use of horses, commensurate with our heritage and the back country resource.

2014 OFFICERS, 1 YEAR

PRESIDENT

Henry Glenn ... 578-2084
sedancowboy@outlook.com

VICE PRESIDENT

Rich Inman ... 388-1564

TREASURER

Debbie Moran ... 509-999-6561

SECRETARY

Sharon Fraser ... 539-2783

DIRECTORS

ONE YEAR TERM

Dan Porter ... 388-0290, 539-0879

Steve Thienes ... 578-2124

Jim Wing ... 587-8880

TWO YEAR TERM

John Mutter ... 285-0516

Larry Thomas ... 586-6878

Dan Marsh ... 587-7578

STATE BOARD MEMBERS

Rich Inman (2 years) ... 388-1564

Jim Allbright (1 year) ... 599-4620

John Mutter (Alternate) ... 285-0516

NEWSLETTER EDITOR

Brant Robey ... 222-5971
pbr@wisptest.net

BCH WEB MASTER

Dan Marsh ... 587-7578
webmaster@bchmt.org
http://gvbch.bchmt.org

UPCOMING EVENTS:

WEDNESDAY TRAIL CREW : AUGUST 6, 13, 20, 27

BOARD MEETING : AUGUST 7, 7:00 PM

Springhill Church, West Babcock

GVBCH BBQ : AUGUST 16, 4:00 PM

Glenn Haven Ranch, [see page 3 for details](#)

GENERAL MEETING : AUGUST 21, 7:00 PM

Springhill Church, West Babcock

VIRGINIA CITY POKER RIDE, AUGUST 30

The State BCH July Newsletter is available [HERE](#)



PRESIDENT'S REPORT:

Hello Back Country Horsemen,

I hope each of you are getting out and riding a lot. The trail crews have made a lot of progress and I hope that you have had an opportunity to go on a trip and help them.

The Poker Ride was a huge success; we had 186 registered riders. The weather was good and no one got permanently lost or hurt so all in all, a good day. We still have several projects to work on so stay tuned. All info is usually on our web site. A shout out to Dan Marsh for all he does for the club on the web site. Please send articles to Brant for the newsletter it makes her job easier if she has something to edit.

The GVBCH BBQ is August 16th at our place so everyone come prepared to have fun. We will be serving Carolina style Pork BBQ with all the fixings. I might throw on a beef brisket as well since the last one turned out so well. I have lots of room and plenty of corrals for your horses. Come and ride the Northern Bridger's for a day and enjoy some good fellowship and food in the evening. Bring your own drink and RSVP [Molly](#) the details are elsewhere in the newsletter.

May God Bless the Trails you ride.

Henry

GENERAL MEETING MINUTES — JULY 17

THERE WAS NO BOARD MEETING IN JULY

The General Meeting was called to order by Rich Inman at Springhill Church in Bozeman. Officers, directors and state board members present were Rich, Debbie, Sharon, Dan P, Jim W, John, Larry, Dan M.

Rich motioned to accept the minutes as printed in the newsletter, Chris seconded, none opposed.

TREASURER'S REPORT

Checking \$8,790.00 Savings: \$20,025.48. Debbie made a motion to reimburse Rich \$18.98 for trash bags, seconded by Barb, none opposed.

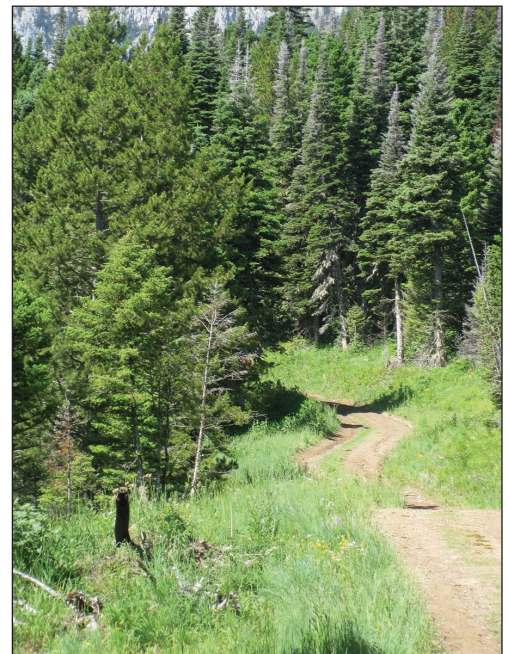
MEMBERSHIP: 75

OLD BUSINESS

Poker Ride at Bridger Bowl on July 12th had 187 registered riders and was overall a successful event.



2014 Poker Ride



**GVBCH BBQ RIDE IN THE BRIDGERS
SATURDAY, AUGUST 16**



view into Ferry lake from top of Shaffhouse.

Meet at
Glenn Haven Ranch
800 Seitz Rd West
578-2084

Appetizers and Social Time: 4:00 pm

Dinner: 5:30 pm

Bring a dessert, appetizer or relish tray to share and your own drinks (water/soda will be provided). Members of the Gallatin Saddle and Harness Club and guests are also invited to attend.

Ride options:

Shaffhouse Trail

Battle Ridge

Zade Mountain

Bracket Creek

Poker Ride trail

[RSVP for dinner by Aug 14, 2014](#)

406-578-2084 or email: sedancowgirl@gmail.com

Menu: BBQ pulled pork, coleslaw & baked beans

Corrals are available

Dinner cost: \$5.00 per person

Henry & Molly Glenn
Photo by Dan Porter



BULL CREEK TRAIL CLEARING

On Thursday, 7/24, Clark Kinney, Larry Thomas, John Mutter, Rich Inman, Scott Shuler and Kim Roberts left Belgrade at 0530 headed to Gardiner to work on the Bull Cr. trail which runs from Buffalo Fk cabin to Slough Cr. cabin. We rode 15 miles on Thursday from the Slough Cr. transfer in YNP to Buffalo Fk cabin. The flies were very busy. After taking care of horses, we ate a fried chicken dinner and turned in for the night at 9:30 pm. Friday morning, the coffee pot was on at 0530. Horses were turned out to graze, breakfast was eaten, then we packed up and headed out on trail 84 for Slough Cr. This trail rises from 7700 feet at Buffalo Cabin to about 8700 feet at the Buffalo/Slough divide. We were told to expect a number of trees to cut as we headed to the divide. To our surprise there were none to clear from the trail. We ate lunch at the divide, enjoyed the fantastic scenery, and were thankful for the lack of flies. It was about 26-28 degrees at Buffalo Cabin the night before and it did a real number on the flies.

The work began from the divide on. We had many big trees to saw as we worked our way to Slough Cr. The ranger district had given us 4 large nippers to use to clear small trees from along the trail. We worked our way down the trail until about 3:00 pm when we made a decision to head for Slough Cr. cabin which was 3+ hours away and see if we could even get through. Only trees we could not get around were cut for the next 3 hours. Both horses and workers were glad to see Frenchy's meadow and the cabin.

Upon reaching the cabin about 6:00 pm we unpacked, took care of the horses, then had a steak and potatoes dinner before rolling into the sack at 10:00 pm. It was a long day with tired horses and people. A lot of clearing and cutting were done on the trail.

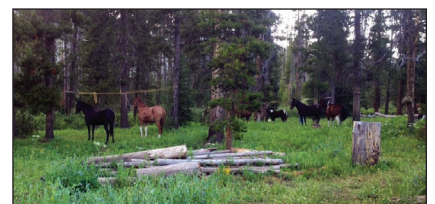
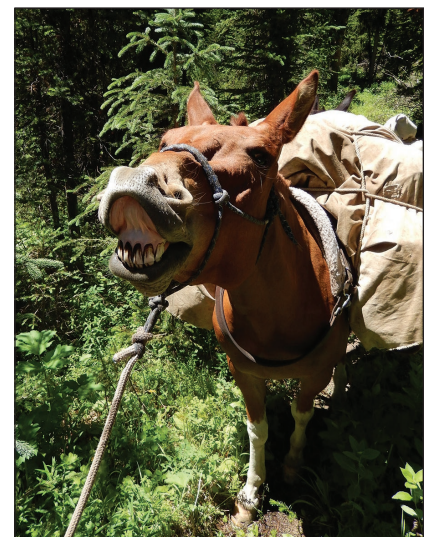
Saturday morn the coffee pot was on at 0530 and the crew was up getting horse chores done. After a hearty sausage and hotcake breakfast we headed back up the trail to where we had left off on Friday. We sawed all the downfall on the way back up then ate lunch and turned around and nipped/cleared small trees that were encroaching on the trail all the way back to Frenchy's meadow. Trail 84 is now sawed out and nipped except for about 2-3 miles in the middle on the Slough Cr. side that still needs nipping. There always is work for another day.

Sunday morn the coffee pot was again on at 0530. After a bacon and hotcakes breakfast we cleaned up the cabin, packed our stock and headed down the trail to the Slough Cr. transfer. We arrived at the transfer about 1:30 pm despite the swarms of flies that tried to keep us from getting there. It was a great trip covering about 45 miles and donating over 280 hours of volunteer work on trails. Thanks to all who participated.

I must add here that John Mutter is one heck of a trapper. He cleared out a few mice on Friday night leading to a very peaceful night on Saturday.

—John Mutter

Photos by Kim Roberts



BULL CREEK TRAIL CLEARING



HORSING AROUND



Photos by Janice Cartwright



Jan Elpel's story, "The Big Grassy," about a ride last year with 3 Rivers BCH appears in *Big Sky Journal's* summer issue. The photography was supplied by the publisher. You can read it [HERE](#).

GVBCH IS INDEBTED TO THE FOLLOWING BUSINESSES & MEMBERS
WHO CONTRIBUTED TO THE SUCCESS OF OUR 2013 POKER RIDE:

Ardeson Boots & Shoes
Montana Canvas
Murdoch's Ranch & Home Supply
Northern Energy Propane
Rocky Mountain Hat Company
DJ Bar Ranch
Ag Depot
All West Veterinary Hospital
B&B Plumbing
Big Shooters Espresso
Big Sky RV
Bozeman Saddle Outlet
Bridger Glass & Windows
Bunkhouse Originals
C'est la Vie Salon
Chalet Market
Double Diamond Halters
Faithful Friends Animal Clinic
Four Corner Saddlery
Freeway Enterprizes
Hardaway Veterinary Hospital
Knife River
Kountry Korner Café

Lee & Dad's
Mama Mac's
Matt's Saw Shop
Montana Equine Medical & Surgical
Center
Montana Side Saddle
Owenhouse Ace Hardware
Remuda Coffee
R.O. Brooks Custom Leather
Rocky Mountain Supply
Rocky Mountain Supply
Rocky Mountain Truck Center
Sandy McManus Designs
Steer In Trailer Sales
The Coffee Pot
Mountain Arts Pottery / Coffee Pot Bakery
Three Forks Saddlery
Touch of Sense Massage
Treasure State, Inc.
True Value Hardware
Wheat Montana
Yellowstone Country-Belgrade
Harrington's Pepsi Cola

GVBCH MEMBER SPONSORS:

Alice Pilgeram
Beth Merrick
Dan Marsh
Rich Inman
Jan Elpel
Janice Cartwright
Spensor Simons



FRIEND US ON FACEBOOK

